

DynaRound™ Guardrail System

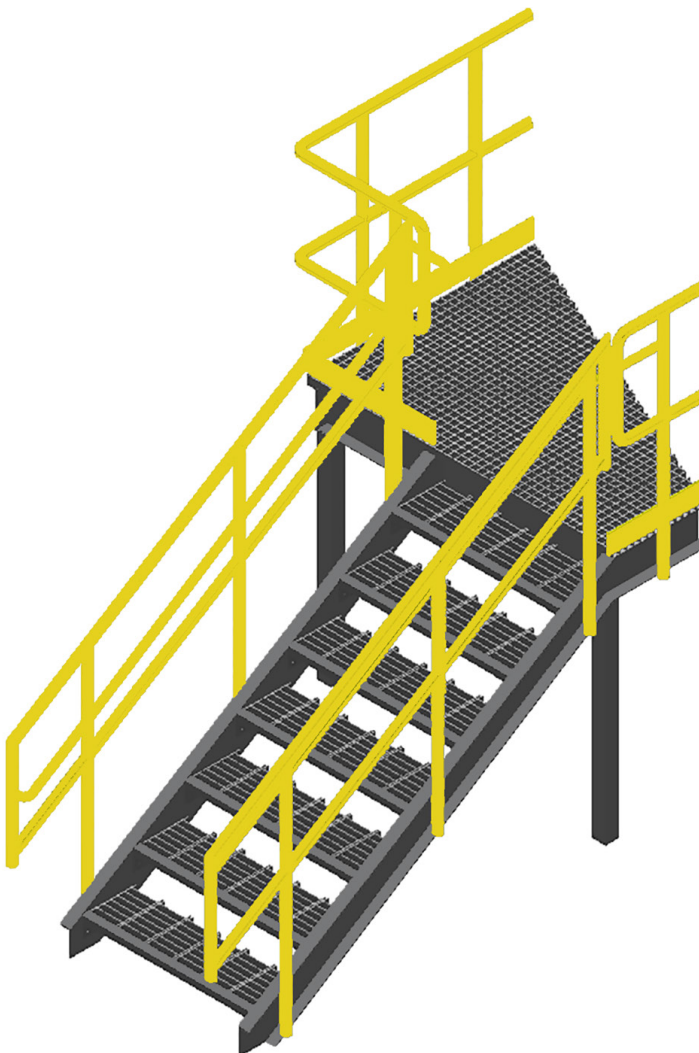
Fibergrate introduces the new DynaRound FRP guardrail solution, composed of 1.9" O.D. pultruded tubes. The DynaRound guardrail system is UV-coated and offers extreme durability and corrosion resistance, with the ability to withstand conditions where aluminum or metallic round rail systems won't last. Popular applications include water/wastewater facilities, food processing plants, and other industrial manufacturing facilities, plus commercial and recreational facilities.

The DynaRound FRP round rail system can be used in applications where safety and ergonomics are a major concern. Round rails eliminate the flat surfaces of square tube systems which can become a resting place for tools and other equipment, creating potentially hazardous situations for dropping/falling objects. The rounded railing and corners also eliminate sharp edges which provide a more comfortable grip for end-users. In addition, the overall appearance of the system is more aesthetically pleasing than the square tube alternative because all fasteners are hidden, thus providing a smooth, clean look.

Fibergrate's DynaRound guardrail system is designed and manufactured to be easily installed with no guesswork involved. Components are lightweight and easy to fabricate. Savings on labor and equipment often make the total installed cost of DynaRound comparable to that of steel. Combining lower installation

costs with low maintenance and long life, DynaRound offers a life cycle cost that is significantly lower than that of its counterparts.

Fibergrate can also provide a customized round rail system. Our localized sales force, along with an in-house team of experienced engineers and drafters will work directly with the customers to ensure the right DynaRound system is specified for their application. Whether a small platform or a massive structure, with complex FRP railing mounting conditions and special connections, Fibergrate has the knowledge and experience to assist with every step of the design and fabrication process.

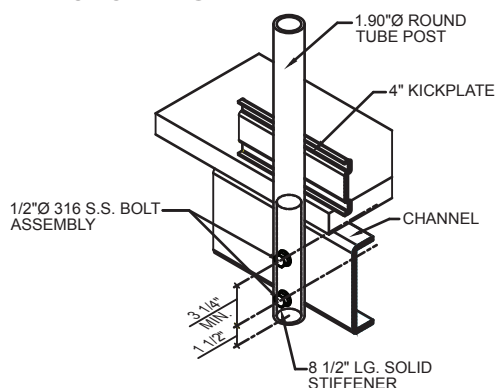


- **NEW** Round Guardrail System
- Comfortable Grip for End-Users
- Corrosion Resistant
- Lightweight
- Easy Installation
- Industrial, Commercial & Residential Use

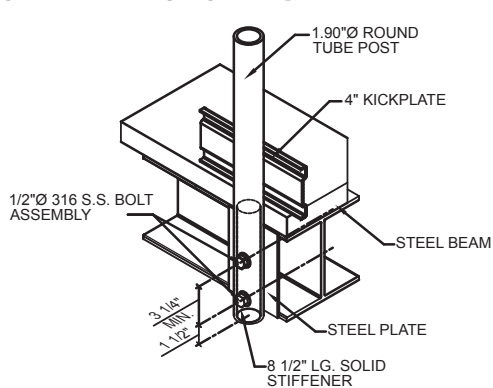
DynaRound™ Post Installation Methods

All details are for posts spaced 4' max on centers to meet a F.O.S. of 2.0 under OSHA and IBC loads, unless noted otherwise.

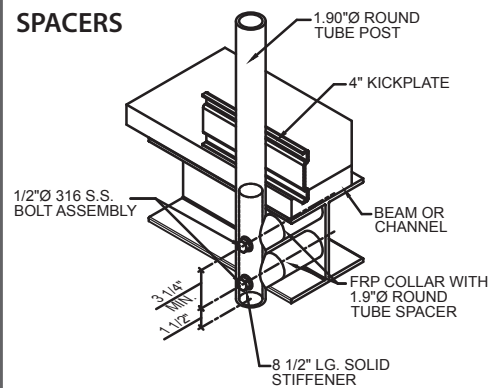
DRAWING A - POST TO FRP OR STEEL CHANNEL



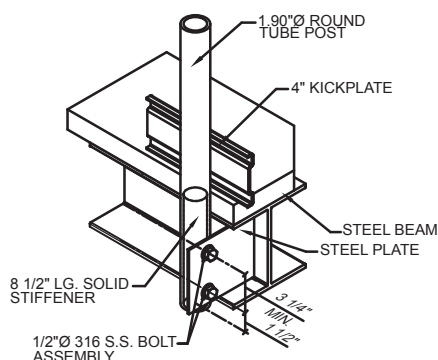
DRAWING B - POST TO STEEL PLATE ON STEEL BEAM



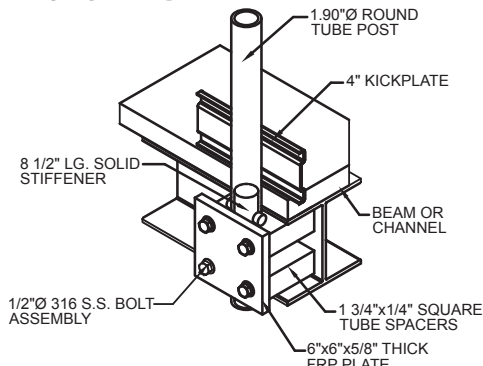
DRAWING C - POST TO FRP OR STEEL BEAM OR CHANNEL WITH FRP SPACERS



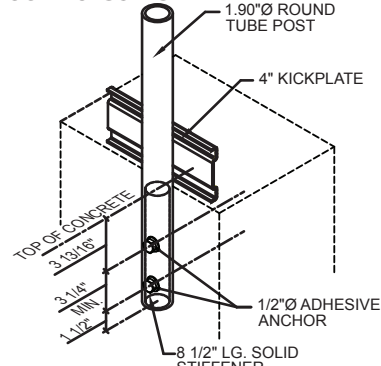
DRAWING D - POST TO STEEL ANGLE ON FRP OR STEEL BEAM



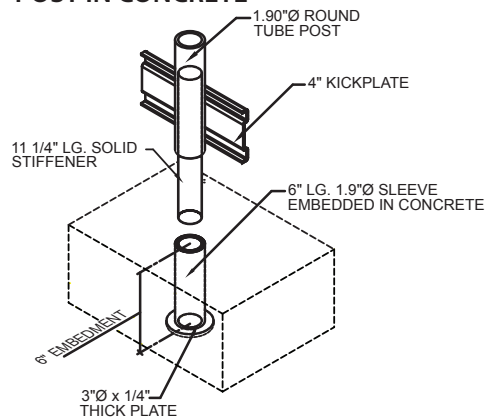
DRAWING E - REMOVABLE POST TO FRP OR STEEL BEAM



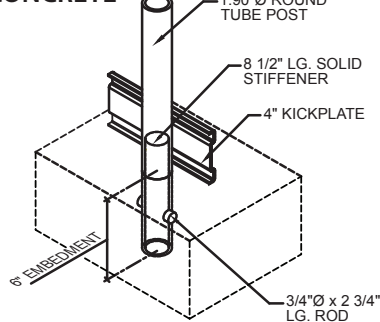
DRAWING F - SIDE MOUNT POST TO CONCRETE



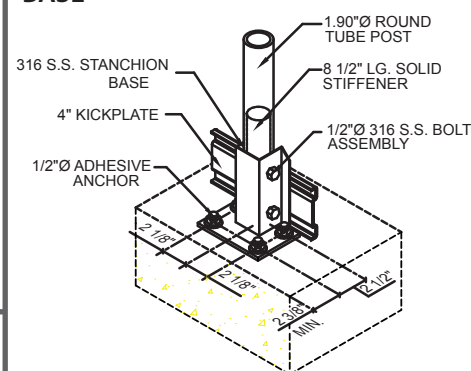
DRAWING G - REMOVABLE EMBEDDED POST IN CONCRETE



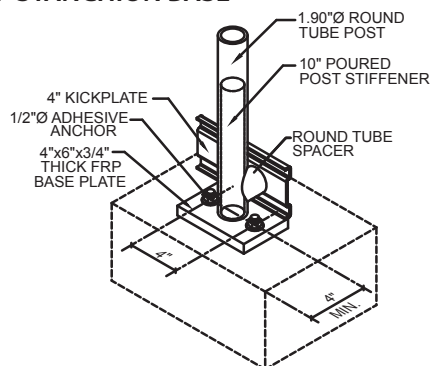
DRAWING H - FIXED EMBEDDED POST IN CONCRETE



DRAWING I - TOP MOUNTED STAINLESS STEEL STANCHION BASE

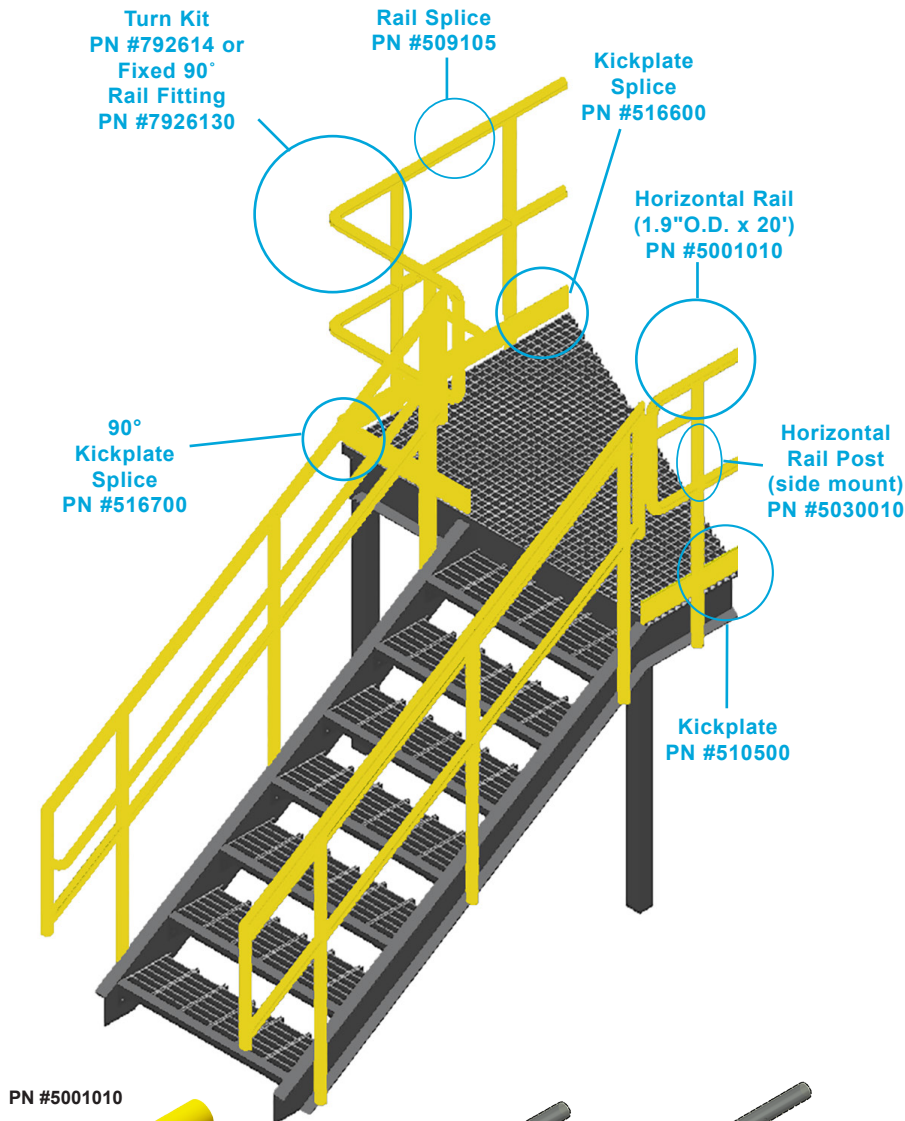


DRAWING J - TOP MOUNTED FRP STANCHION BASE

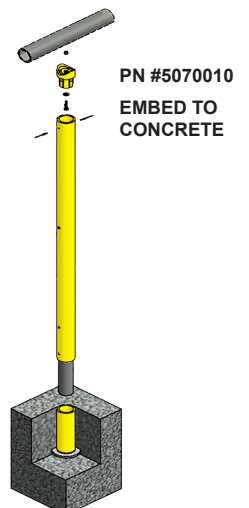
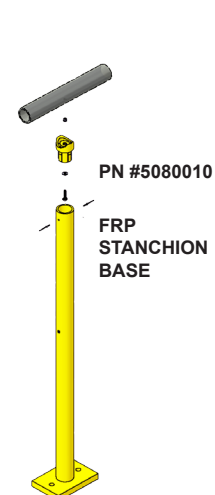
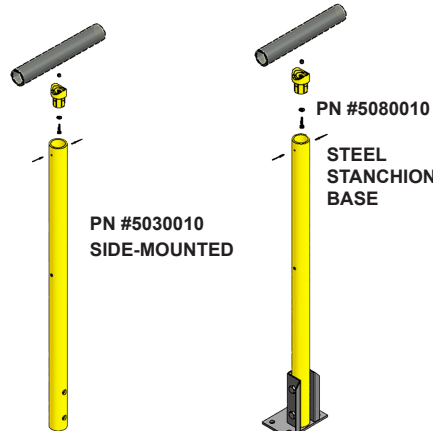
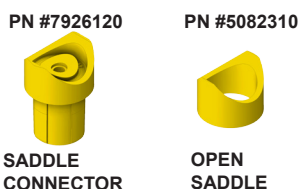
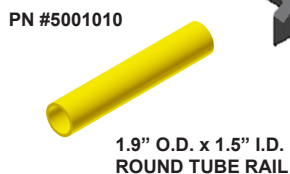
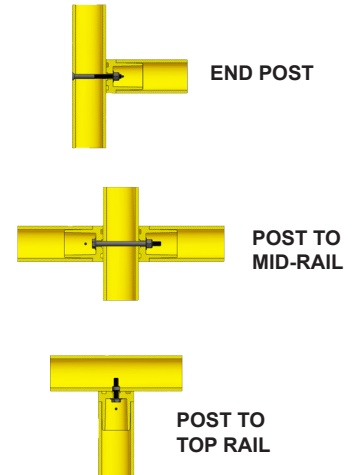


DynaRound™ Modular Guardrail System

The DynaRound modular railing system is offered as UV coated for maximum weather resistance. Straight and adjustable rail splice kits are easy to incorporate, installed with riveted + bonded connections. Rail to post connections use saddle connectors with hidden bolts for the cleanest installation possible. Specially designed saddles and connectors minimize the number of miter cuts required to make a gap free installation easy. DynaRound modular posts are designed for conventional side-mounting, and kits are also available for installation of either top-mount stanchion bases or removable concrete-embedded bases. *Inclined guardrail assemblies need to be shop fabricated.*



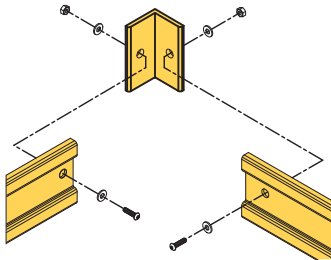
Cross Sections of Rail to Post Connections



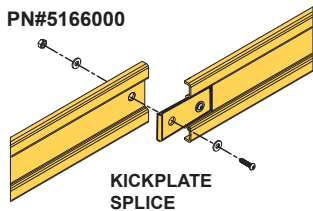
DynaRound™ Modular Guardrail System

PN#5167000

90° KICKPLATE SPLICE



PN#5166000



**KICKPLATE
SPLICE**

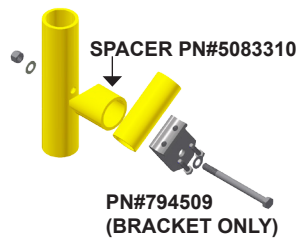


**PN#792614
ADJUSTABLE RAIL
SPLICE**



**PN #7926130
FIXED 90°
RAIL FITTING**

SS HANDRAIL BRACKET



**PN#794509
(BRACKET ONLY)**

**TWO SELF TAPPING SCREWS
(PN#756670) ARE REQUIRED
TO ATTACH SS BRACKET TO
HANDRAIL TUBE. ONE SPACER
(PN#5083310) AND ONE 3/8"
x 4-1/2" DIA HEX HEAD BOLT
ARE REQUIRED TO CONNECT
BRACKET TO GUARDRAIL POST.**

ASSEMBLY PART #	DESCRIPTION	
NOTE: All part numbers containing exposed material are UV coated items.		
5105000*	Kickplate	9/16" Deep x 4" High x 1/8" Thick x 24' Long
5166000*	Kickplate Splice Kit	1 ea. Splice 1-3/4" x 4" x 3/16"
		2 ea. 1/4" x 1" x Socket Round Head Bolts, Nuts and Washers
5167000*	Kickplate Splice Kit 90°	1 ea. Splice 2-1/8" x 1-1/8" x 3/16"
		2 ea. 1/4" x 1" x Socket Round Head Bolts, Nuts and Washers
5030010	Post Kit Side Mount	1 ea. Round Tube Horizontal Post
		Saddle Connector
		1/4" x 1-1/2" Bolt, 1/4" Washer
		1 ea. #10 x 1" Hex Washer Head Self Tap Screw
		1/4"-20 Rivnut 18-8 SS
		2 ea. Rivets 18-8 SS
5070010	Post Kit Removable Embed to Concrete	1 ea. Round Tube Removable Horizontal Intermediate Post
		Saddle Connector
		1/4" x 1-1/2" Bolt
		1 ea. #10 x 1" Hex Washer Head Self Tap Screw
		1/4"-20 Rivnut 18-8 SS
		2 ea. Rivets 18-8 SS
5082010	Post Kit Top Mount w/ FRP Stanchion Base	1 ea. Round Tube Horizontal Intermediate Post
		1 ea. Stanchion Base FRP
		Saddle Connector
		1/4" x 1-1/2" Bolt
		1 ea. #10 x 1" Hex Washer Head Self Tap Screw
		1/4"-20 Rivnut 18-8 SS
		2 ea. Rivets 18-8 SS
5080010	Post Kit (SS Base)	1 ea. Round Tube Horizontal Intermediate Post
		1 ea. Stanchion Base 316 SS
		2 ea. 1/2" x 3" Bolts
		Saddle Connector
		1/4" x 1-1/2" Bolt
		1 ea. #10 x 1" Hex Washer Head Self Tap Screw
		1/4"-20 Rivnut 18-8 SS
		2 ea. Rivets 18-8 SS
5001010	Rail	1.9." O.D. x 1.5" I.D. x 20' Long Yellow Round Tube
792614	Adjustable Rail Splice	1 ea. Adjustable from 39° to 180°
7926130	90° Rail Splice	1 ea. Fixed 90° Handrail Connector
7926150	End Cap	Round Guardrail End Cap
509105	In-Line Rail Splice	In-Line Splice Round 10"
506510	Adjustable Splice Kit	2 ea. Adjustable from 39° to 180°
		8 ea. Rivets 18-8 SS
506400	90° Fixed Splice Kit	2 ea. Fixed 90° Rail Connector
		8 ea. Rivets 18-8 SS
506100	In-Line Splice Kit	1 ea. Splice 1.9" O.D. Round Tube
		4 ea. Rivets 18-8 SS
794509	Handrail Bracket	316 SS Handrail Bracket for 1.9" O.D. Post
5083310	Spacer	1 ea. 1.9" O.D. HR Bracket Spacer
7926120	Saddle Connector	Saddle Connector for Round Guardrail
5082310	Open Saddle	Open Saddle for Round Guardrail
*Kickplate Assembly Part Numbers are the UV coated counterparts to the part numbers used for the square tube system.		
Bonding material should be ordered with each shipment of railing material. Order 1 kit (# 549100) for every 15 posts		
SI Conversions: inch = 25.4 mm 1 foot = .305 m 1 mm = .0394 inches 1 meter = 3.28 feet		